

# BEYOND THE AISLES

SUMMER 2022



Achieving More  
**TOGETHER.**

## IN THIS ISSUE

- Making Lemon-aid . . . . . 2
- VAL Is Thirty & Thriving . . . . 3
- How it Started ... How It's Going . . . . . 4-5
- Survey Spotlight . . . . . 6-7
- Grounds for Growth . . . . . 8
- Class Is in Session . . . . . 9
- Divisions Doing Good . . . . . 10
- Divisions Having Fun . . . . . 11
- Summer Wellness & Savings . . . . . 12
- Fruit Forward . . . . . 13
- Painting a Picture . . . . . 13
- Barbecue Bash . . . . . 14-15

## BY THE NUMBERS

We're one of America's fastest-growing retailers — check out our numbers as of May 31, 2022:

<b>46,000</b> total employees	more than <b>2,310</b> stores in 38 states
<b>25</b> divisions & warehouses	
more than <b>4.2 BILLION</b> items sold so far this year	

# MAKING LEMON-AID

Join us as we partner with Alex's Lemonade Stand Foundation for the fourth year. ALSF is an organization on a mission to fight for children with cancer through "funding impactful research, raising awareness, supporting families and empowering everyone to help cure childhood cancer." This year, we're taking a (lemonade) stand against childhood cancer with a new commitment: bringing our total raised for ALSF to \$10 million by 2027!

## OUR PARTNERSHIP OVER THE YEARS

**2019**

- ALDI launches ALSF partnership with a \$1 million contribution.
- ALDI attends and supports the Great Chefs Event in Chicago, Los Angeles and Philadelphia.

**2020**

- ALDI contributes \$1 million again.
- ALDI launches in-store ALDI finds items featuring the ALSF logo.
- ALDI matches gifts made on the ALSF website on Giving Tuesday.

**2021**

- ALDI contributes \$1 million and creates ALDI Heroes Fund to assist families in the Travel for Care program. ALDI employees contribute \$128K to the ALDI Heroes Fund.
- Employees participate in Million Mile and log 73,000 miles.
- ALDI commits to match every dollar ALSF raises on Giving Tuesday; ALDI and ALSF raise a total of \$192K.

**2022**

- ALDI pledges to cumulatively raise \$10 million by 2027.
- More to come!



**Tim Davis**, Faribault employee, runs ALSF fundraiser with his family!



# VAL IS THIRTY & THRIVING

The Valparaiso Division is taking us back to the age of mixtapes and Walkmans with the celebration of their 30th ALDIversary on June 8! VAL first opened its doors in 1982 (the hair was better back then, we're convinced). To commemorate, they're planning a party worthy of the occasion this July 16. Take a walk down memory lane with us as we honor VAL!

## A LOOK BACK

We got an inside look at the early days from an employee who was there when it all started!



VAL DIVISIONAL OFFICE

OFFICE EMPLOYEES WITH INFORMATION FOR CORPORATE HAD TO SHARE THREE COMPUTERS.

OFFICE EMPLOYEES SAVED INFORMATION FOR CORPORATE ON CASSETTES, WHICH HAD TO BE TAKEN OFFSITE EACH DAY AS "BACKUP" COPIES.

STORES PHONED IN THEIR ORDERS, WHICH HAD TO BE MANUALLY ENTERED TO PRINT OFF PICK LISTS FOR WAREHOUSE EMPLOYEES.

THE DIVISION STARTED OFF WITH JUST 11 STORES, ABSORBING THEM FROM THE GREENWOOD AND BATAVIA DIVISIONS.



VAL STORE MANAGERS VOLUNTEERING

ALDI ONLY HAD ABOUT 750 PRODUCTS AT THE TIME.



# HOW IT STARTED ...

Welcome Intern Class of 2022! This year, a total of 135 interns are joining our company on the AHEAD, divisional, National Buying, National Customer Interaction, National Finance & Administration, National IT and National Supply Chain Management teams.

Meet some of our success stories: interns turned employees!

## NIKKI ESSLING



### What team(s)/department(s) did you intern with, and when?

From summer 2018-spring 2020, I interned with Human Resources on the Recruitment Marketing team and Employee Communications team (it was called "Employee Communications" during my internship).

### Tell us about the projects you worked on as an intern:

During my internship, I primarily worked on two projects: launching MyALDI and working on our Student Ambassador Program.

### How did your internship turn into a career with ALDI?

Through hard work, a willingness to learn and genuine support from ALDI leaders. So many people invested in my growth with mentorships and feedback. Special shoutout to my internship director, Andrea Owen!

## CASEY HAREWOOD



### What team(s)/department(s) did you intern with, and when?

I was a district manager intern in 2016 and again in 2017 with the Saxonburg Division.

### Tell us about the projects you worked on as an intern:

In 2016, I worked on a project to improve the accuracy of shipping products from the warehouse to the stores. In 2017, I worked on an individual project that focused on how ALDI can improve the remodel process.

### How did your internship turn into a career with ALDI?

By doing the internship for two consecutive summers, I was able to learn the operations and culture early on. This definitely gave me an advantage and allowed me to go into my senior year of college with a full-time position secured for the following summer.

### What team(s)/department(s) did you intern with, and when?

I was a district manager intern in the Hinckley Division during the summer of 2016.

### Tell us about the projects you worked on as an intern:

My project was looking at the price elasticity of produce items and trying to determine what price points generated the most sales.

### How did your internship turn into a career with ALDI?

My internship was the gateway to getting me into ALDI. After working alongside a district manager during the internship, I realized that this was something I really wanted to do. ... Toward the end of my internship, I was asked to come on full-time after I finished my senior year of college.

## MIKE RULLER



## ... HOW IT'S GOING

We love a good party; we especially love an ALDiversity party. Good thing we have a reason for one: an employee ringing in **40 years** with us, Tim Davis!



## TIM DAVIS

- Was hired out of junior college as a store manager.
- Trained the original stores that started our company: Stores 29 and 34 in Iowa.
- Currently works as a store manager in the Faribault Division.

### WHAT'S DIFFERENT ABOUT ALDI TODAY?

First 25 years were a snail's pace of expansion and growing the product line. Competition was fierce, coming into Des Moines at the time we did. SuperValu was the #1 market in the U.S. for wholesale and retail. This is before Walmart came into play.

In the last 10 years, the expansion is exciting. When I go on vacation to a place like Florida, you see an ALDI; that's exciting. Even my daughter works for ALDI; she's a Director of Operations in Dwight! When I started, we would fight for a radio spot — **it's fascinating to see our transformation into this great company and shopping experience.**

### FUN FACT:

I can honestly say **I am one of the few people who actually, when I opened my Round Lake store, had Karl Sr. and Karl Jr. [Albrecht] in my store.** ... They were there for the store opening in 1983 or '84. Especially rare since most of the younger leaders may have only met Karl Jr.

# SURVEY SPOTLIGHT

Spread the word about surveys! We put surveys in place because we value your feedback. What can we say? We want to ensure the best possible experience for you. The best part? These surveys are confidential, which means you can express yourself freely. In fact, we welcome your honest feedback; we need it to improve our programs and processes for you.

TWO OF THE UPCOMING SURVEYS NEAR AND DEAR TO US ARE:



## PAY, BENEFITS & RECOGNITION SURVEY

It's payday! The Pay, Benefits & Recognition Survey is designed to get your take on your pay, the company's benefits and recognition programs. Our HR team joined forces with an external partner to create it. The end goal? To learn which options you like best! The survey is open from [July 11-22](#).

### Interested in any of these benefits?

Wellness Program

Tuition Assistance

Caregiver Leave

Student Loan Support

Take the [Pay, Benefits & Recognition Survey](#) and tell us!

Your time, like your feedback, is valuable, so we're only asking for some of it during the workday. You get to shape our pay, benefits and recognition strategy just by speaking up. Just think: rewards that suit you (pretty sweet)!

## YOUR VOICE – YOUR ALDI

Raise your hand because we want to hear from **you!** From **Sept. 12-30**, our Employee Engagement team is opening up the floor to you in Your Voice – Your ALDI: a global survey seeking your perspective on how we can enhance your work experience.

We're looking for your input to determine our future focus areas: categories that need improvement. Did you know focus areas actually come from you? They're a direct result of the survey, which means we don't even know what they are until you've picked them (pretty neat, huh?). Potential focus areas include:

- Communication
- Company Culture
- Diversity, Equity & Inclusion
- Health & Well-being
- Leadership
- Teamwork
- Training & Development
- Your Job

We mean what we say, too. Our 2019 Your Voice survey yielded results, and we listened. Your participation highlighted three focus areas that we've concentrated on for improvement:

**Communication**

- Microsoft Teams rollout
- Store Wi-Fi

**Health & Well-being**

- Employee Assistance Program
- Employee Relief Fund

**Teamwork**

- Hiring process reinvention
- Curbside expansion

Take the Your Voice – Your ALDI survey and provide your insight into our company culture. It's confidential (we worked with two external partners to guarantee it), so your answers are private.

**Partner with us as we pave the way to a better employee experience!**

### 2019 SURVEY FAST FACTS:

More than  
**19,400**  
ALDI U.S. employees participated in the **YOUR VOICE SURVEY**

**95%**  
of our employees recommended ALDI as a **GREAT PLACE TO SHOP**

Our **Employee Engagement score** was **83%** that's three percent above the U.S. benchmark

**86%**  
of our employees **FEEL RESPECTED** by leadership

## EXPANSION EXPEDITION

1. LOX “bridges the gap” between the Haines City, Jefferson, Mt. Juliet and Rosenberg Divisions.
2. LOX will encompass **120** counties in **four** regions: the Florida Panhandle, southern Alabama, southern Mississippi and southeastern Louisiana.
3. LOX will have **70** stores by the end of 2026.
4. LOX will hire approximately **800** store associates by the end of 2022.
5. The division is **500** miles long (Lafayette to Tallahassee) and **250** miles high (Gulf Shores to Tuscaloosa).
6. **23** stores are opening in 2022, with **eight** existing stores being absorbed from HAI, JEF, MTJ and ROS.

### BONUS FACT:

The celebration of Mardi Gras originated in Mobile, Alabama, contrary to popular belief!

# GROUND<sup>S</sup> FOR GROWTH



**Store 158**  
March 10 Grand Opening

The Loxley quest continues! Our team is busy building our brand-new, eco-conscious LOX distribution center and expanding stores in the Gulf Coast region.



**LOX Warehouse**  
April 13 Construction Stage

We’re excited to announce that the LOX warehouse is set to open **July 1!** Cue the confetti. The office will open up shop later this year. Between you and us, we can confirm an opening celebration is underway. The date is \*shh\* a surprise, but expect it this year. In the meantime, get your party hat ready.

The last time you heard from us, we delivered the very exciting news that three stores had already opened, with 20 more on the way! We’re happy to report that, as of June 1, **16** stores are open for business. By warehouse opening day, the center will service up to **18** stores.

Stay tuned for updates (and a whole lot of celebrating)!

## CLASS IS IN SESSION!



## REPORT CARD<sup>A+</sup>

The results are in: A+ for MyAcademy!

Don't just take our word for it. Listen in on what our pilot testers had to say. From divisions to stores to warehouses to National Services, participants were happy to report:

I COMPLETED THE TASKS TODAY, AND OVERALL JUST WANT TO SHARE THAT THIS SYSTEM IS USER-FRIENDLY AND A BIG STEP FORWARD FROM ACE.

IT'S VERY SIMPLE AND SELF-EXPLANATORY, NOT COMPLICATED AT ALL.

THE OVERALL FEEL WAS BRIGHT AND WELCOMING.

I LIKE THE HOMEPAGE A LOT. IT IS EASY TO NAVIGATE AND SIMPLE — THERE AREN'T EXTRA BUTTONS OR ADDED ADDITIONAL PLACES. YOU HAVE ALL OF THE INFORMATION NEEDED RIGHT THERE.

THE HOMEPAGE LOOKED VERY PROFESSIONAL. ALL THE INFORMATION WAS NEATLY ORGANIZED AND EASY TO GET TO.

Meet MyAcademy: our new one-stop shop for all things learning. To accommodate our company's growth and offer you a better learning experience, our Training & Development team set out to create a new system.

**MyAcademy**  
The pathway to success

Out of this dream, MyAcademy was born, **your** pathway to success. We'll let you in on a little secret (well, not so little): MyAcademy launches **this summer!**

MyAcademy will replace ACE, with one exception: policy acknowledgments. Everything else will reside in MyAcademy, so you'll head there for all training and development needs.

### WHAT ARE SOME OF THE BENEFITS?

- **Personalized experience:** a customizable system that can flex to your needs. That means your dashboard view will match your role.
- **Increased efficiency:** enhanced organization of learning, reporting and administrative tasks to save you time and troubleshooting.
- **Training history:** look back at previously completed training assignments for a refresher.
- **Streamlined onboarding:** new hires, our first stop post-launch is revamping the onboarding experience to give you greater confidence and readiness for your new job.

You're probably used to stopping by ACE only when you need to complete an assignment. Throw that idea out of the window. You'll want to stop by MyAcademy anytime because we'll continue to develop it with new features.

Welcome to the new MyAcademy; we look forward to learning together!



# Divisions Doing Good

Life happens, and we're here for each other when it does. That means donating our time, our money and our support. Why does this value matter to us so much? It's because we're nothing without our people.

## O'FALLON

Tune in, team! Praise 365 Radio selected ALDI as the supplier for their food drive and on-air raffle benefiting the St. Louis community. Radio MC Sean "Scooda" Thomas and members of the Community Action Agency of St. Louis County and Urban League of Metropolitan St. Louis visited an O'Fallon store to obtain gift cards, which were raffled off the week of June 20.



Pleased you could participate, OFA!



## SALISBURY

Friendship is like a cozy blanket on a cold day. An ALDI friendship? Well, let's just say it takes that blanket metaphor to another level. At least, that's what happened in the Salisbury Division when store associate Alex surprised his "work bestie," assistant store manager Heather, with a knit blanket featuring ALDI colors. Divisions Doing Good extends past our employees doing good in their communities to employees doing good for each other. It's that passion for giving that's woven into our company.

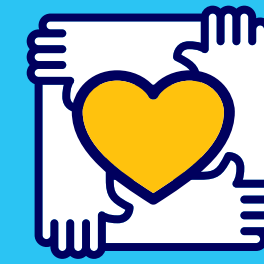


Thank you, Alex, for demonstrating what that generosity looks like in our stores!

## SOUTH WINDSOR

ALDI puts the "A" in the Big "Apple." The South Windsor Division provided shelf-stable ingredients to Common Threads students at PS 112: a Manhattan school. The students also took a chef-guided tour of Store 2 to learn how to buy healthy foods economically. Common Threads is a nonprofit that serves children and families in under-resourced areas with cooking and nutrition education.

Well done, SWN!  Common Threads  
COOKING FOR LIFE



# DIVISIONS HAVING FUN

All work and no play make ALDI a dull company. Good thing we know how to have fun! Take a look at some of the divisions proving we're ready for a good time.

## OAK CREEK

The Oak Creek Division is seeing double! OAK planned a twin day during their spirit week and saw employees team up as dynamic duos.



Party it up, OAK!



## ROYAL PALM BEACH

Introducing our next generation of employees! Royal Palm Beach hosted the prospective associates on Bring Your Child to Work Day.



Pass the baton, RPB!

## SAXONBURG

Tree-hugging time! In celebration of Earth Day, Saxonburg employees planted a tree to beautify the plot of earth near the employee parking lot. SXB also handed out seed packets to sow earth awareness.

Keep going green, SXB!



## SHARE YOUR STORY!

Have a tale to tell? Send it to us at [Communications@aldi.us](mailto:Communications@aldi.us), and it may just be featured in our next edition of Beyond the Aisles!



# Summer Wellness & Savings

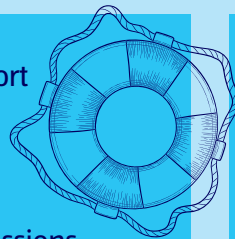
Ready to build your health and wealth this summer with our benefits? Bust out the sunblock and board our ship because we're navigating to a season of wellness and savings.

## EMPLOYEE ASSISTANCE PROGRAM

Summer isn't always a breeze. To support you, we're lending an ear through our Employee Assistance Program.

This program offers:

- Three **free** face-to-face therapy sessions to **all** employees.
- Unlimited telephone consultation.
- Licensed EAP clinicians who can help with everything from stress to grief to relationship wellness.
- Confidential sessions.



## MDLIVE

Summer is here, and that means fun in the sun. But it also means vulnerable skin. Protect it with a skin cancer screening through your medical plan. **MDLIVE** now offers dermatology, so if you're enrolled in our plan, you can consult a specialist virtually. This consultation is the same cost as an in-office visit. Don't forget the sunblock and sunnies while you're at it!

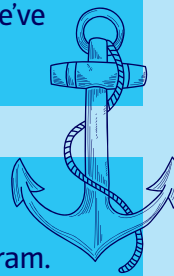


## HRA INCENTIVES

Attention medical plan members: run your way to rewards. You can earn up to **two** \$25 HRA incentives just by being active. Head to [myCigna.com](https://myCigna.com) or the Cigna Apps & Activities app to get started. The app offers fun activities and fitness challenges that will keep you motivated all summer long.

## PerkSpot

Perk up, everyone! We're here to remind you about our favorite employee discount program: **PerkSpot**. Think of PerkSpot as your summer sidekick, discounting the way to your new gym membership or next trip abroad. We've got your ticket stamped — destination: PerkSpot.



## SmartDollar

To keep your summer fling flying, we've phoned a friend: **SmartDollar**® — a financial wellness program. From informational content to an intuitive budgeting tool known as EveryDollar, SmartDollar has you covered.

Follow these SmartDollar® tips for a smashing summer:

- What's the first letter of the financial alphabet? **B** for **budget!** Use EveryDollar and build one out each month.
- Cash flow your trips. While paying for a trip with your credit card might seem the most logical choice (flight rewards, anyone?), it only spells d-e-b-t later. Make sure you can pay your way *and* your stay. If you can't? Staycation time!
- The grass isn't always greener, so don't give into house fever and purchase a new place without the money. If you're still feeling stir-crazy from all those episodes of House Hunters, put on your hard hat and get to work on some in-budget home improvement projects instead.

**Visit the Benefits page on MyALDI to learn more about these programs.**

# FRUIT FORWARD

Welcome to a world where the fruit is fresh and the sips are sparkling. No, you're not in a land far, far away; you're right here at our 2022 ALDI Fruitful Summer Event!



On April 20, our PR team hosted a virtual media and influencer event with lifestyle expert and content creator Rosalynn Daniels to announce a produce aisle "makeover" and lineup of trendy, fruit-forward seasonal alcohol products.

The event was a sip-worthy success! Rosalynn unveiled the summer collection, providing playful tasting notes for each product and detailing how to make a new kind of fruit basket. Our summer seasonal alcohol products are on sale now through September!



## FRUIT BASKET Q&A

### What is our PR team's favorite moment from the event?

Our favorite moment was watching the event come to **fruit**ion and having the opportunity to work with one of our long-standing influencer partners live! Rosalynn did a fantastic job touting our key messages and building excitement with all of our attendees. Now, we are especially excited seeing all of the great coverage we've garnered to date!

### What is our PR team's favorite fruit/drink combo?

Peach and Pineapple Frozen Moscato Slushies made with Utopian Breeze Peach Moscato, frozen peaches and pineapple all blended together for a sweet and refreshing cocktail, perfect for sipping poolside!

### How much do the products cost?

This summer's alcohol collection is trendy yet affordable, starting at \$3.99 per bottle.

## PAINTING A PICTURE

We're painting the town (well, at least part of it)! Our new store in Ramona, California — Store 95 — displays a freshly painted mural reflecting the local landscape. We sponsored the project organized by Ramona H.E.A.R.T. Mural Project: an initiative using art to encourage tourism.

Skip Janes, Moreno Valley Director of Real Estate, takes us behind the scenes:

**"We felt this would be a great opportunity for ALDI to be introduced to the Ramona community and show our support for local efforts to preserve the history of Ramona — through art and through the design of the building exterior (to fit the old main street type storefront look)."**



Artist **Beata Wojcik** created the 250-square-foot mural, which was officially dedicated on April 23. Take a road trip to Ramona for an art tasting!

# BARBECUE BASH

Start a summer social with these savories and soak in the sun all season long.



## HEALTHY SUMMER PASTA SALAD

I scream, you scream, we all scream for ... salad!  
Pasta salad, to be exact.

Recipe courtesy of Shanna Hutcheson of @wellnessforthewin

Prep Time: 10 minutes | Cook Time: 10 minutes  
Total Time: 20 minutes | Servings: 12

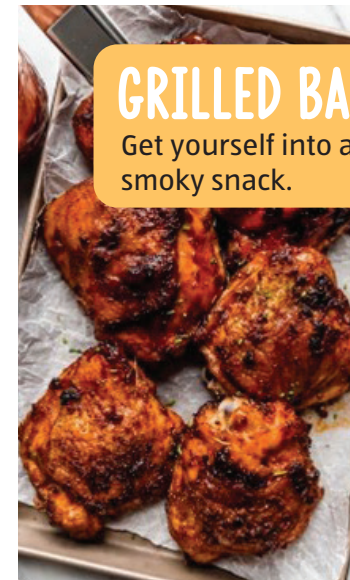


### Ingredients:

- 1 pound **Reggano** Rotini pasta, cooked al dente
- 2 cups cucumber, cubed (or 1 large)
- 1 cup red onion, chopped
- 1 yellow bell pepper, chopped
- 1 cup medley tomatoes, halved
- 1 cup **Specially Selected** Gourmet House Vinaigrette Dressing
- 1 tablespoon **Simply Nature** Organic Basil Leaves
- Freshly cracked salt and pepper, to taste
- 2 tablespoons **Emporium Selection** Shredded Parmesan Cheese, optional topping

### Directions:

1. Bring a large pot of water to a boil and add 1 pound of pasta noodles. Cook according to package instructions or until al dente, about 10-12 minutes.
2. While pasta is cooking, prepare your vegetables. Wash and chop cucumber, red onion and yellow bell pepper. Halve or quarter cherry tomatoes.
3. Once pasta is finished cooking, transfer to a strainer to drain the liquid. Run cold water over the pasta until it's fully cooled.
4. Transfer cooked pasta to a large bowl and add all chopped veggies.
5. Next, pour in 1 cup of **Specially Selected** Gourmet House Vinaigrette Dressing, 1 tablespoon of dried basil leaves and salt and pepper to taste. Mix well.
6. Sprinkle shredded Parmesan cheese on top if desired.
7. Serve cold or store in an airtight container in the refrigerator for up to 4 days.



## GRILLED BARBECUE CHICKEN

Get yourself into a sticky situation with this smoky snack.

Recipe courtesy of Jess Larson of @playswellwithbutter

Prep Time: 10 minutes | Cook Time: 25 minutes

Total Time: 12 hours (includes inactive time)

Servings: 6-8



### Ingredients:

- 1 4-5-pound **Kirkwood** Fresh Chicken Thighs package
- Kosher salt, to season
- 2 cups **Burman's** BBQ Sauce of choice
- For serving, as desired: extra **Burman's** BBQ Sauce of choice, freshly snipped chives, grilled corn, potato salad, macaroni salad, coleslaw, cornbread, etc.

### For the grilled barbecue chicken marinade/brine:

- 1 12-ounce beer of choice
- 1 tablespoon kosher salt

### For the grilled barbecue chicken dry rub:

- 3 tablespoons firmly packed brown sugar
- 1 1/2 teaspoons chili powder
- 1 1/2 teaspoons ground cumin
- 1 1/2 teaspoons garlic powder
- 1 1/2 teaspoons mustard powder
- 1 1/2 teaspoons onion powder
- 1 1/2 teaspoons smoked paprika
- 1/2 teaspoon ground black pepper
- *Optional: 1/8-1/4 teaspoon cayenne pepper*

### Directions:

#### Prep:

- **Chicken:** If you'd like to make barbecue chicken without the skin, tear the skin off each chicken thigh. If you'd like to make skin-on barbecue chicken, simply trim off any excess skin or fat.
- **Dry Rub:** Add all listed ingredients to a small bowl or jar. Stir to combine. Set aside, or store on your spice rack in an airtight container for up to 2 months.

#### Grilled Barbecue Chicken:

1. **Brine the chicken:** Add the beer (or buttermilk) to a large bowl or zip-top bag. Add in the kosher salt and stir to combine. Add the chicken, submerging all the parts in the beer mixture. Set aside to brine for at least 20 minutes or up to 2 days. If brining longer than 1 hour, be sure to store the chicken in the brine in an airtight container or zip-top bag in the refrigerator. If you have the time, try to brine for at least 12 hours.
2. **Preheat the grill:** Prepare your grill for indirect cooking, creating a zone of direct high heat and a second zone of indirect heat. If using a gas grill, begin preheating at least 15 minutes before grilling. If using charcoal, light the charcoal at least 30 minutes before grilling.
3. **Season the chicken:** Once the grill is hot, remove the chicken from the brine, patting off any excess moisture with a paper towel. Season generously with salt and the barbecue chicken dry rub. If using skin-on chicken, work your fingers under the skin to season both sides of the skin.
4. **Grill the barbecue chicken:** Place the seasoned chicken on the indirect side of the grill (skin side up, if using skin-on chicken), as close to the fire as possible without being over the direct heat. Cook the chicken, rotating the pieces 180 degrees every 15 minutes until an instant-read thermometer inserted in the thickest part of the chicken (without hitting the bone) registers a temperature of 150°F. Depending on the size of your chicken and the temperature of your grill, this could take as little as 15 minutes or as long as 40 minutes.
5. **Baste the chicken:** Move the chicken over direct heat. If using skin-on pieces, flip the chicken so that the skin side is down. Use a pastry brush to baste the barbecue chicken with barbecue sauce and cook for 2 minutes. Flip the chicken and cook for 2 minutes more. If using skinless chicken, baste the second side with barbecue sauce; if using skin-on chicken, don't apply barbecue sauce to the skin to keep it nice and crispy. Repeat 2-3 times until your chicken is as charred and saucy as desired and an instant-read thermometer inserted in the thickest part of the chicken (without hitting the bone) registers a temperature of 160°F. Remove from the grill and set aside to rest for 5-10 minutes before serving.
6. **Serve your grilled barbecue chicken** with extra barbecue sauce and your favorite summer side dishes. Enjoy!



# OUR CORE VALUES

Our core values are what we live by as a company and guide the way we act with our customers, suppliers and each other.

## CONSISTENCY

*Consistency leads to reliability. We mean what we say. We are consistent in our dealings with people, product, price and all other aspects of our day-to-day professional life.*

## SIMPLICITY

*Simplicity creates efficiency, clarity and clear orientation within our organization as well as for our customers.*

## RESPONSIBILITY

*Responsibility stands for our commitment towards our people, customers, partners and the environment. It also includes principles such as fairness, honesty, openness, service orientation and friendliness.*



Achieving More  
**TOGETHER.**

# WE'RE HIRING

**Do you have friends or family eager to work for ALDI? Encourage them to apply to our open store, warehouse and office positions today — and you could get rewarded!**

**Scan the QR code below to check out our Employee Referral Program and learn how you could earn some extra cash!**



To view available jobs, visit [careers.aldi.us](https://careers.aldi.us).