

## We're extending the life cycle of our packaging!

Get to know the process of circularity and how it's helping us help the environment.



We're back with another installment of our **Sustainability Strides series!** Tune in to learn about an important topic known as **circularity** from Sustainability Associates Lulu Croissant and Amy Hettinger and Sustainability Managers Jaclyn Bukas and Kristy Meyer.



## What is circularity?

It's a production model where we reduce, reuse and recycle products to extend their lifespan.

## What's our favorite part about circularity?

It recaptures waste as a resource! Recyclable material that includes recycled content is one of the most sustainable materials we can use for packaging, so we're committed to promoting a system of circularity. Here's the impact:

- Generates little waste as a product's next use is already planned
- Combats biodiversity loss (reduction or loss of species) through the creation of more materials with long life spans
- Reduces pollution levels due to limited economic activity (the result of creating products with long life spans)

In a true **circular economy** (when goods and services are reused for as long as possible), "materials never become waste and nature is regenerated." Check out circularity in action.

## Circularity Life Cycle

Follow the path of packaging in a system of circularity to find out what's involved and what we're working toward as a company.



### Did you know?

A deposit-return scheme is a system in which shoppers pay a deposit for a product that they'll get back once the product is returned empty.

## Waste at Work

We put waste to good use! Here are some other ways we're doing that:

- We're actively pursuing our plastics & packaging goal of using 20% post-consumer recycled (PCR) content (material that's already been tossed into the recycling bin) in our plastic packaging by 2025.
- We maintain a forestry packaging requirement. All relevant fiber-based primary packaging in our core range ALDI products must consist of **FSC**-, **PEFC**- or **SFI-certified** material or greater than 70% recycled content.
- We've got a single-stream recycling project in the works. Single-stream recycling or SSR refers to recycling products in a single bin rather than multiple, simplifying the recycling process.

The work we're doing today supports our plastics & packaging and operations & food waste sustainability charter initiatives within our **2030 Vision**, the ALDI international National Sustainability strategy.

### Did you know?

Many packaging materials like paper, plastic, glass and aluminum can include recycled content!

## How can you get involved?

- Get to know some of our industry partners: **The Association of Plastic Recyclers**, **U.S. Plastics Pact**, **Ellen MacArthur Foundation**, **Organix**, **Trex** and **Vanguard**. Check out the **Environmental Protection Agency** and **The Recycling Partnership** for additional resources.
- Follow company recycling bin signage to maximize the material collected for future packaging and other uses.
- Whenever you shop, look for products that contain recycled content. Here's some of ours:
  - **Paper:** Various boxes used for baking mixes, cereals, nutritional snack bars, pasta and rice
  - **Plastic:** Certain laundry detergent and fabric softener bottles and beverage bottles like water
- Get out there and recycle on **America Recycles Day** this Nov. 15. According to the **EPA**, recycling and composting has increased from 6% to 32.1% between 1960 and 2018. We've come a long way, but there's still more recycling to be done. That's why we encourage you to get to know your local guidelines and **recycle right!**
- Keep doing your research. Check out how your waste is sorted to see why it's so important to look at the labels before opening the recycling bin.





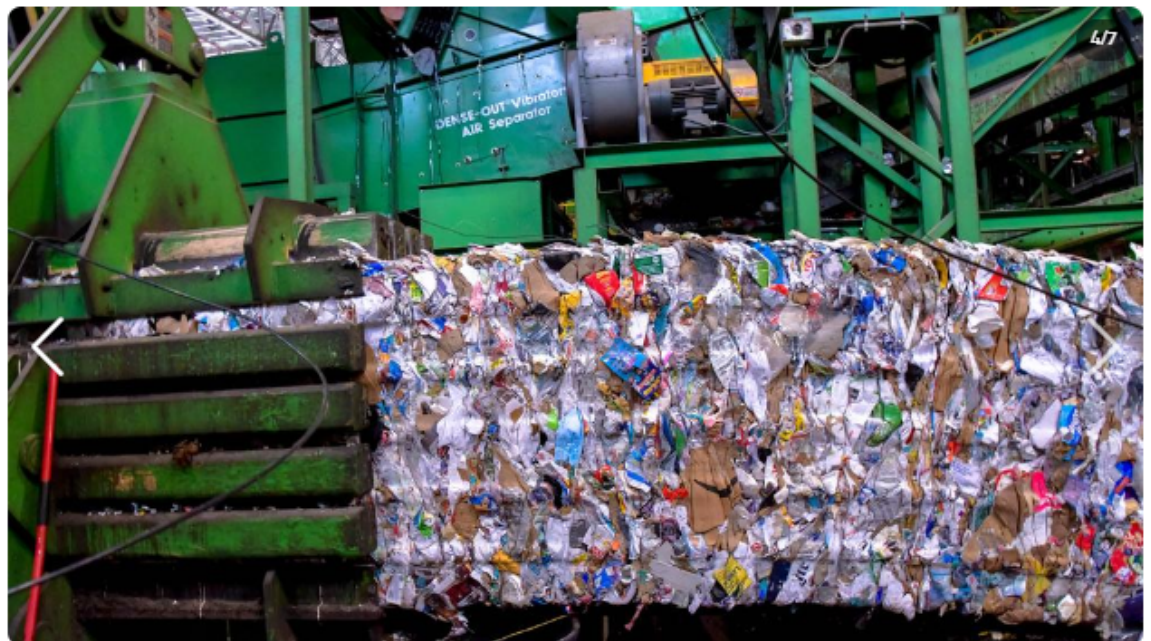


1/7



2/7









5/7



6/7

